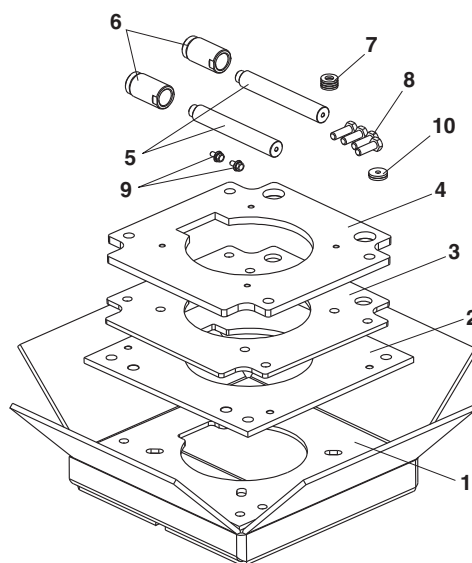


20029111

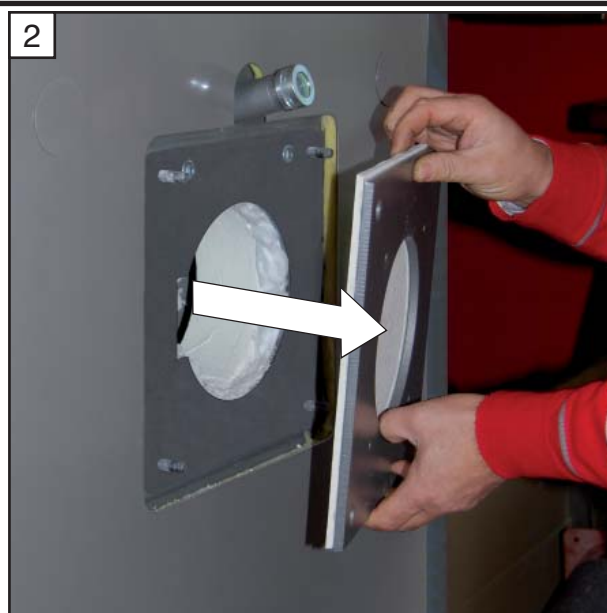
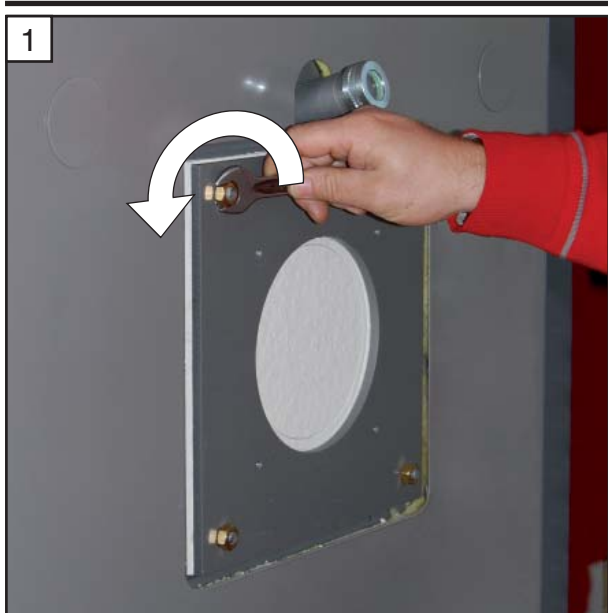
**ACCESSORIO SCORRIMENTO TESTA RX**  
**ACCESSOIRE DE COULISSEMENT POUR TÊTE RX**  
**RX HEAD SLIDE KIT**  
**GLEITZUBEHÖR FÜR BRENNERKOPF RX**  
**ACCESSOIRE INSCHUIVEN KOP RX**



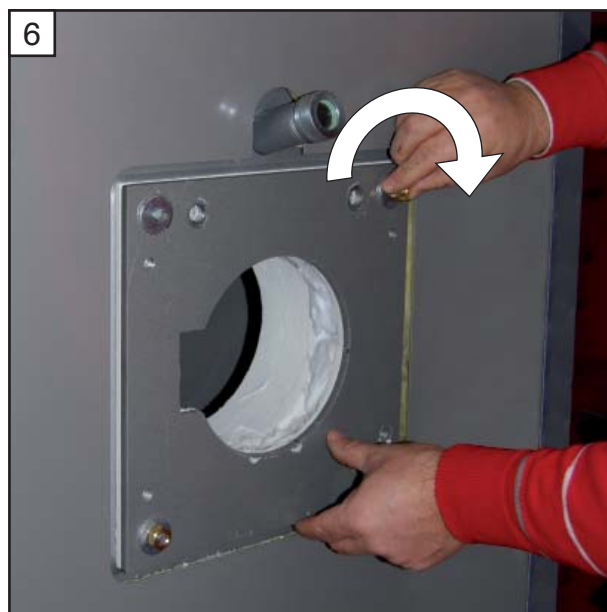
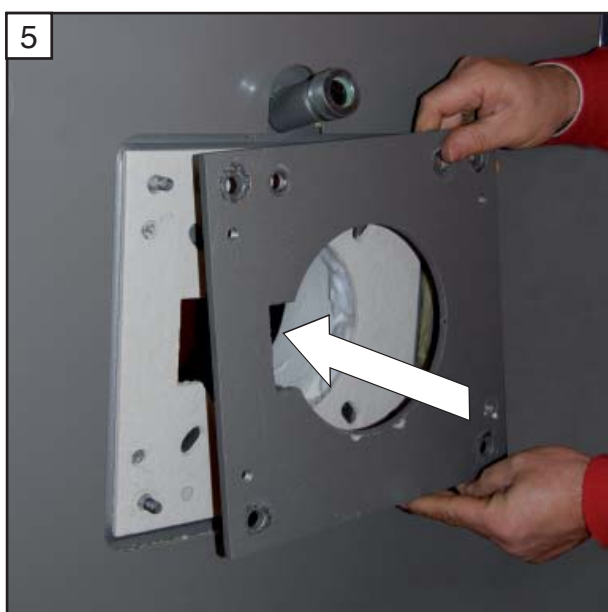
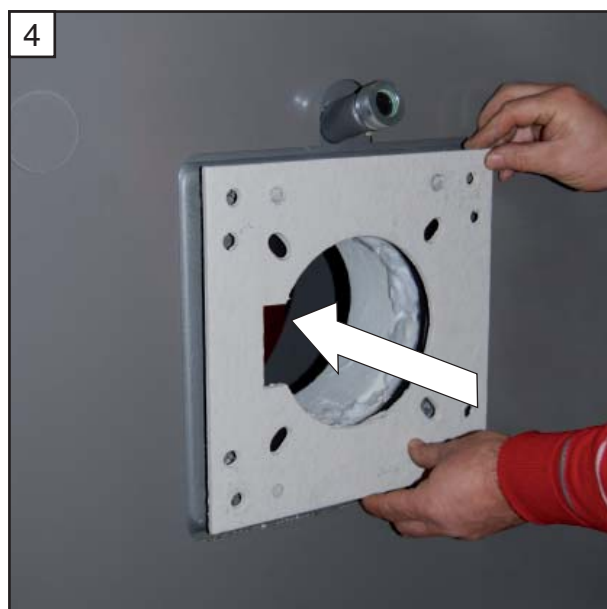
- 1 - Guarnizione per flangia 300x300
- 2 - Flangia fissaggio bruciatore 300x300
- 3 - Guarnizione per KIT flangia
- 4 - Flangia scorrevole in alluminio
- 5 - Guida acciaio elettrozincato
- 6 - Boccia di scorrimento in ottone
- 7 - Rosetta piana M10
- 8 - Vite M10x25
- 9 - Vite M6x12
- 10 - Rosetta M6

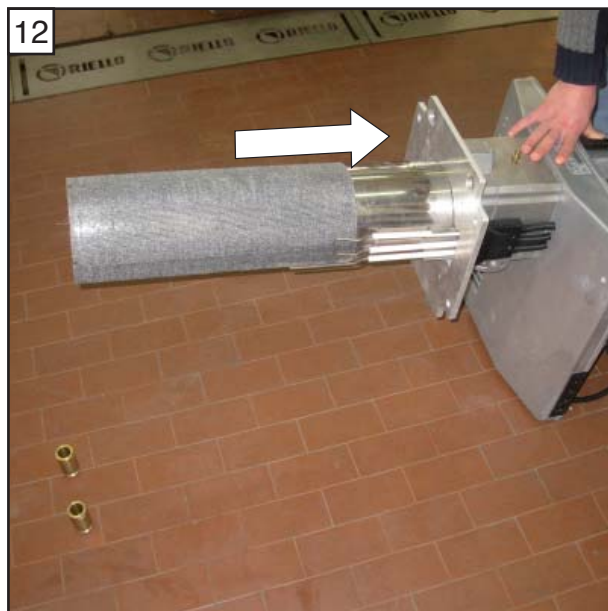
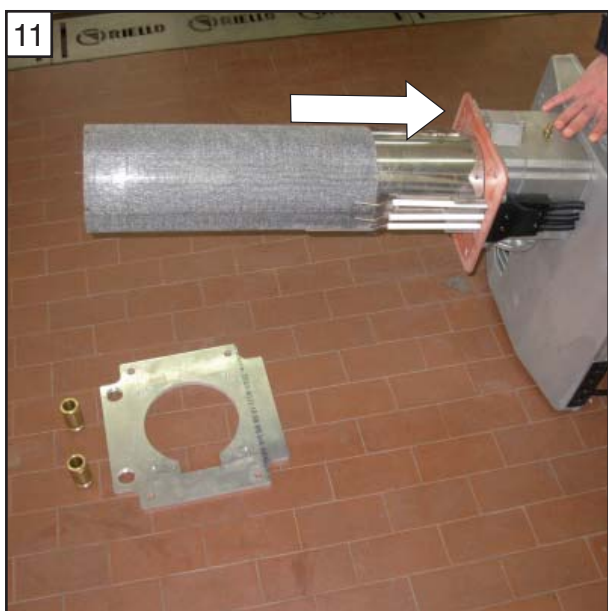
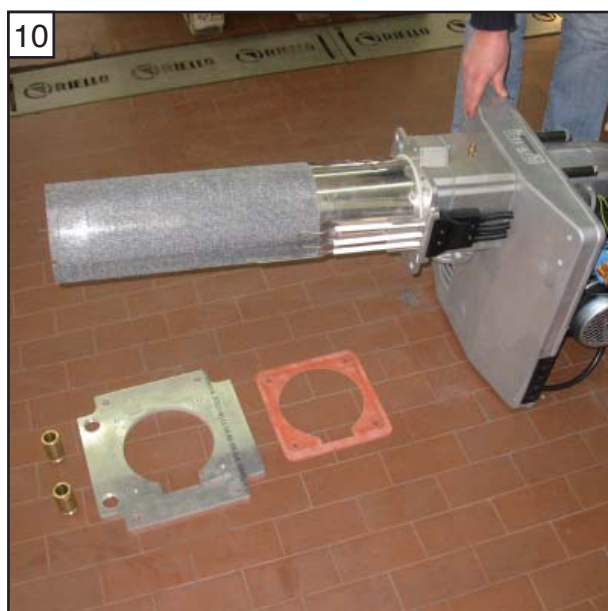
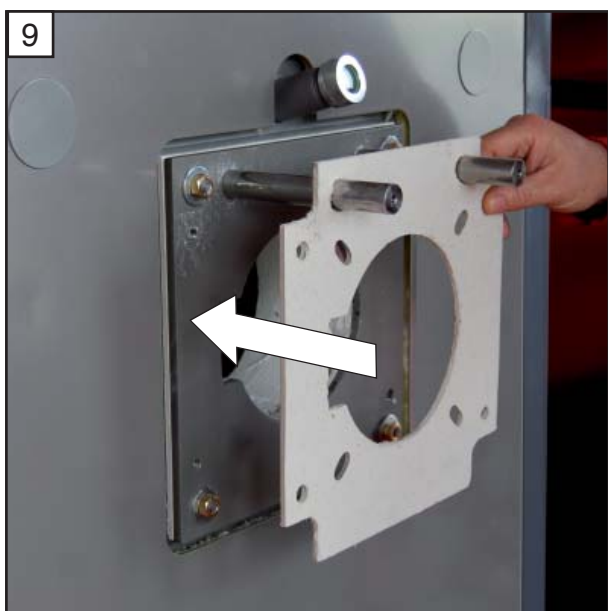
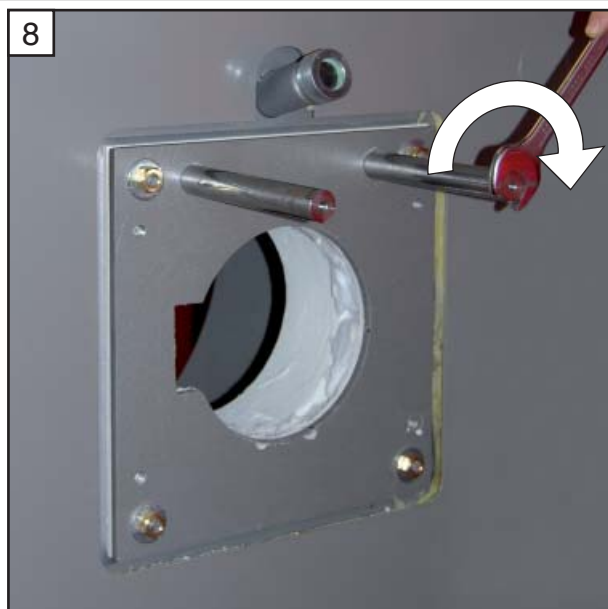
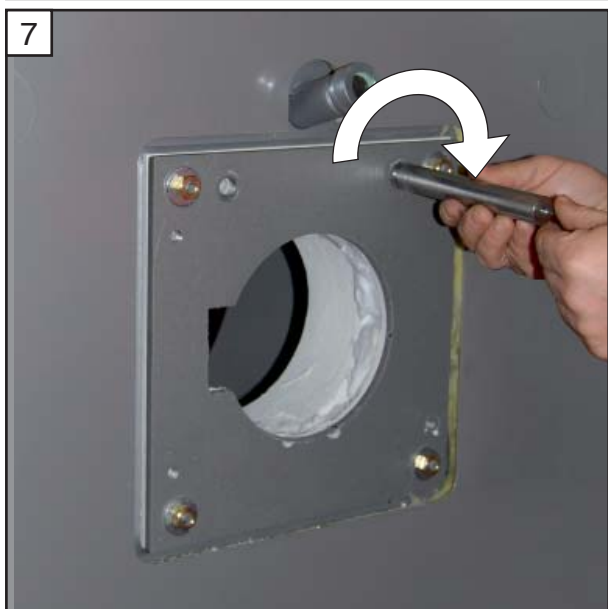
- 1 - Joint pour bride 300x300 / *Flange seal, 300x300*
- 2 - Bride de fixation du brûleur 300x300 / *Burner mounting flange, 300x300*
- 3 - Joint pour KIT bride / *Kit flange seal*
- 4 - Bride coulissante en aluminium / *Aluminium sliding flange*
- 5 - Guides en acier électrozincué / *Electro-galvanised steel guide*
- 6 - Douilles de coulissement en laiton / *Brass sliding bush*
- 7 - Rondelle plate M10 / *M10 flat washer*
- 8 - Vis M10x25 / *M10x25 bolt*
- 9 - Vis M6x12 / *M6x12 bolt*
- 10 - Rondelle M6 / *M6 lock washer*

- 1 - Flanschdichtung 300x300 / *Flensdichtung 300x300*
- 2 - Brenner-Befestigungsflansch 300x300 / *Befestigungsflens brander 300x300*
- 3 - Dichtung für FLANSCHSATZ / *Pakking voor FLENSKIT*
- 4 - Gleitflansch aus Aluminium / *Aluminium schuifflens*
- 5 - Schiene aus elektroverzinktem Stahl / *Elektroverzinkte, stalen geleiding*
- 6 - Gleitbuchse aus Messing / *Koperen glijbus*
- 7 - Flachscheibe M10 / *Platte sluitring M10*
- 8 - Schraube M10x25 / *Schroef M10x25*
- 9 - Schraube M6x12 / *Schroef M6x12*
- 10 - Scheibe M6 / *Sluitring M6*

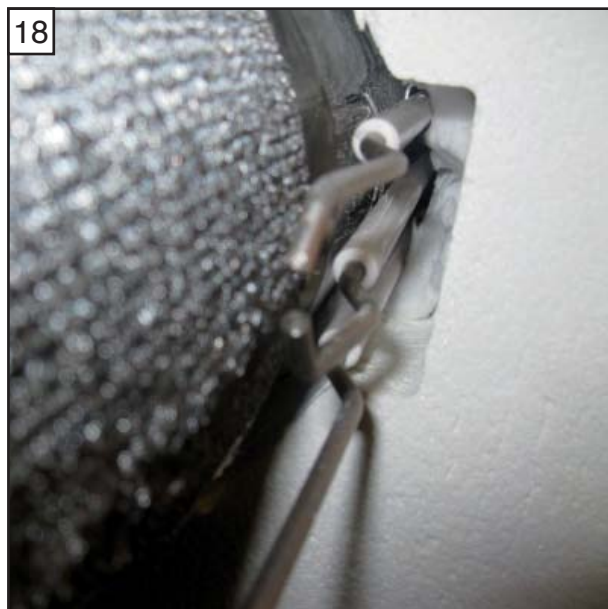
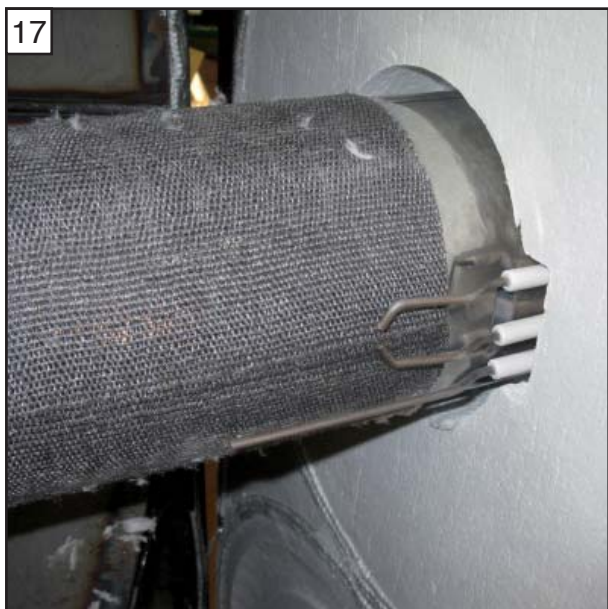
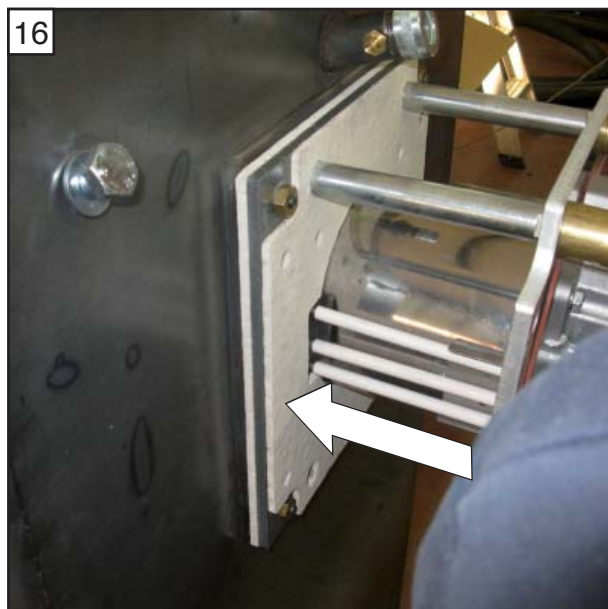
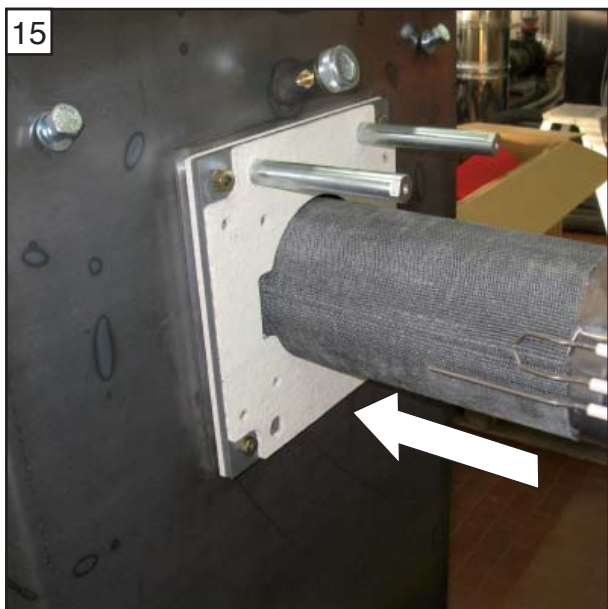
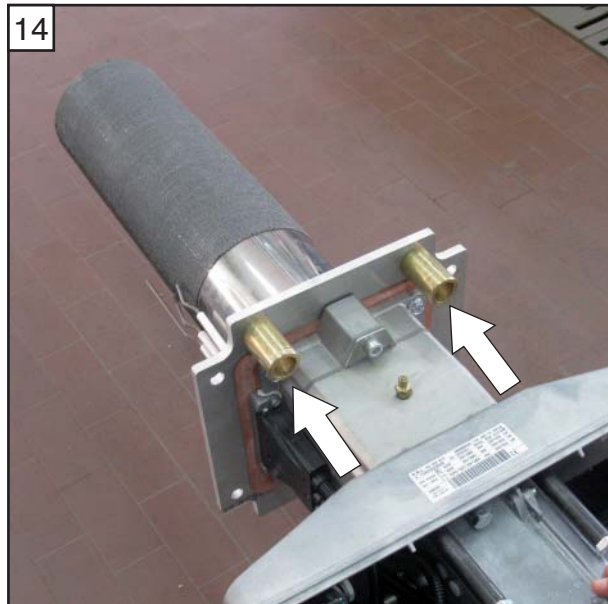
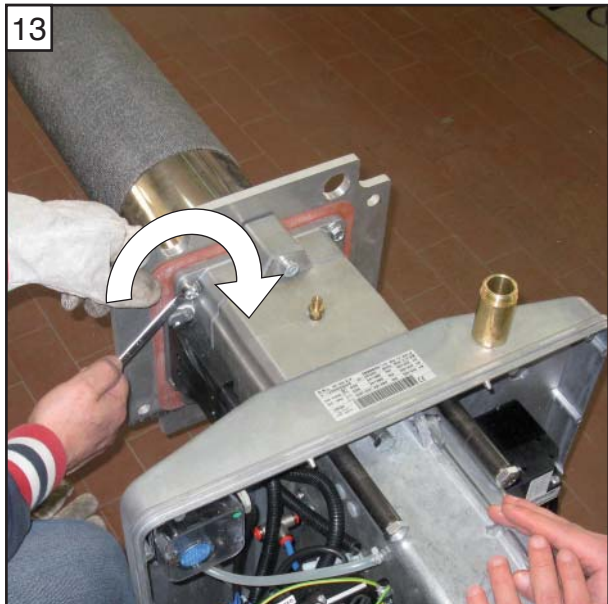


**Montaggio dell'accessorio e del bruciatore**  
**Montage de l'accessoire et du brûleur / Installation of the kit and the burner**  
**Einbau von Zubehör und Brenner / Montage van accessoire en brander**

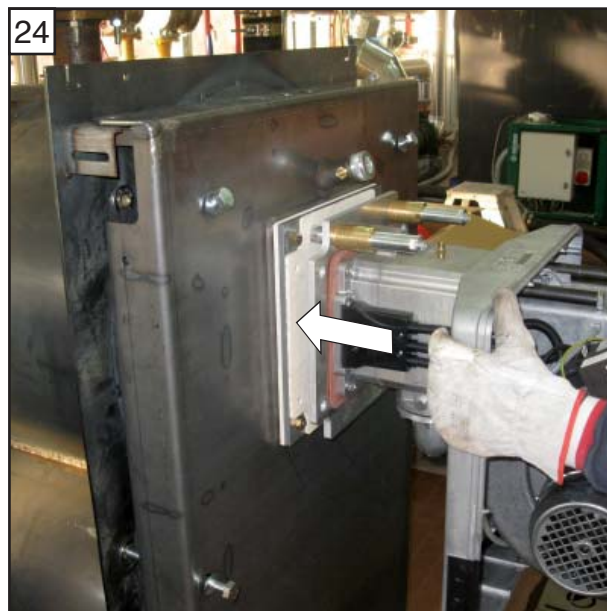
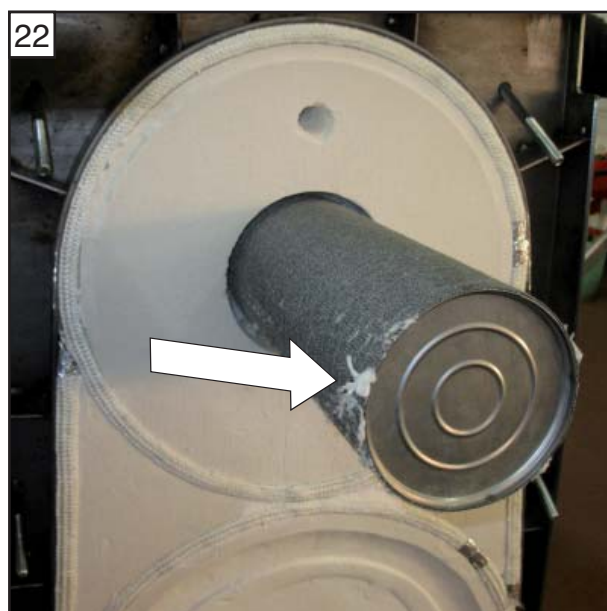
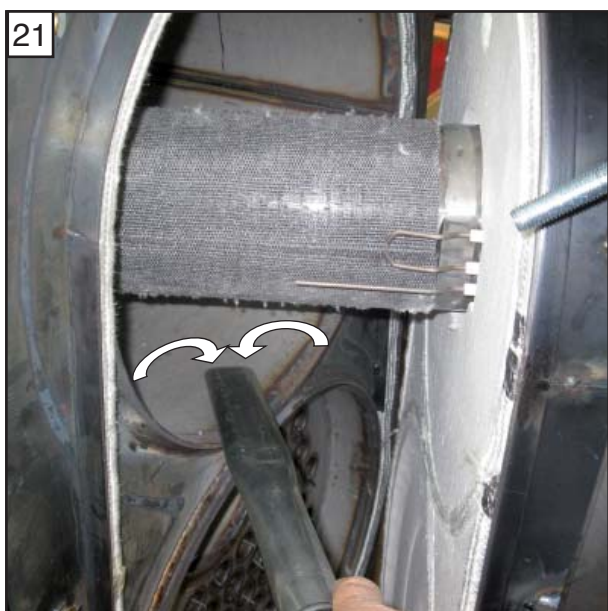
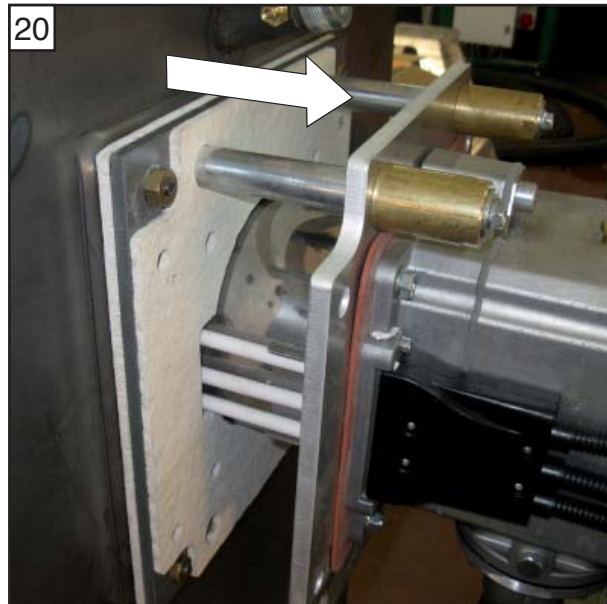
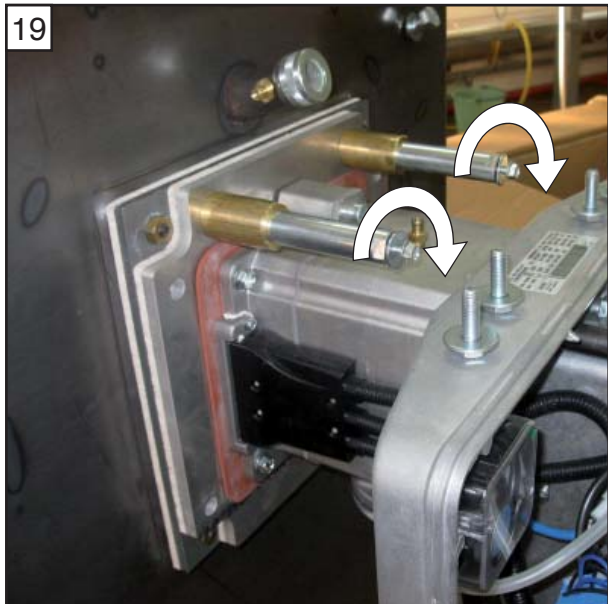


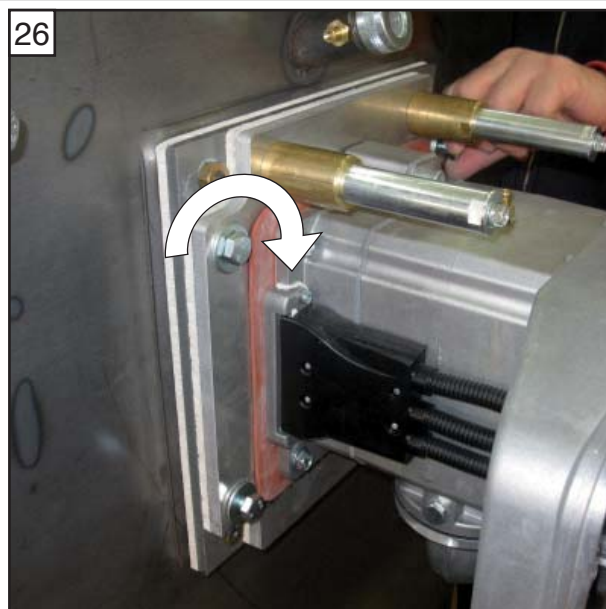
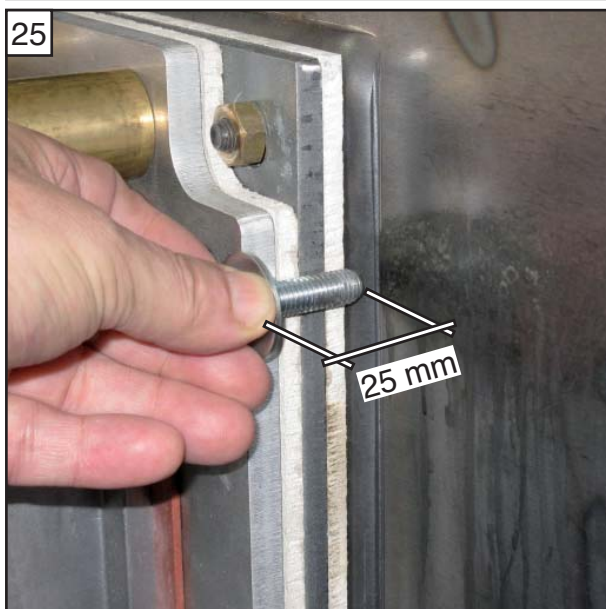




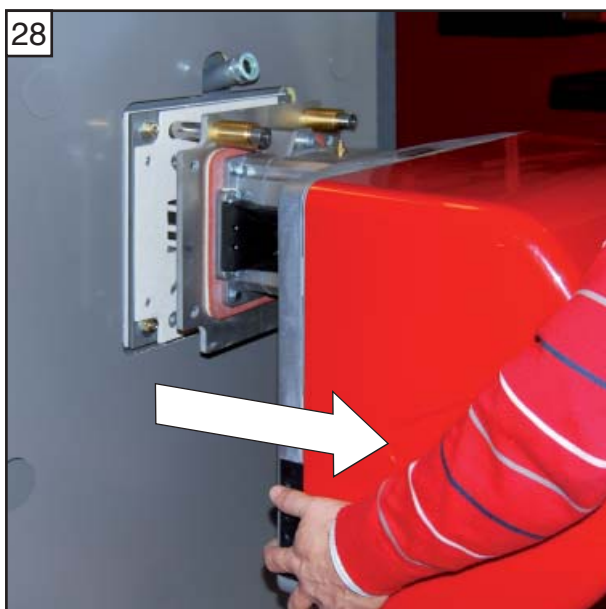








**Apertura del portello caldaia**  
**Ouverture de la porte de la chaudière**  
**Opening the boiler door**  
**Öffnen der Kesseltür**  
**Openen van de ketel deur**



30



31

