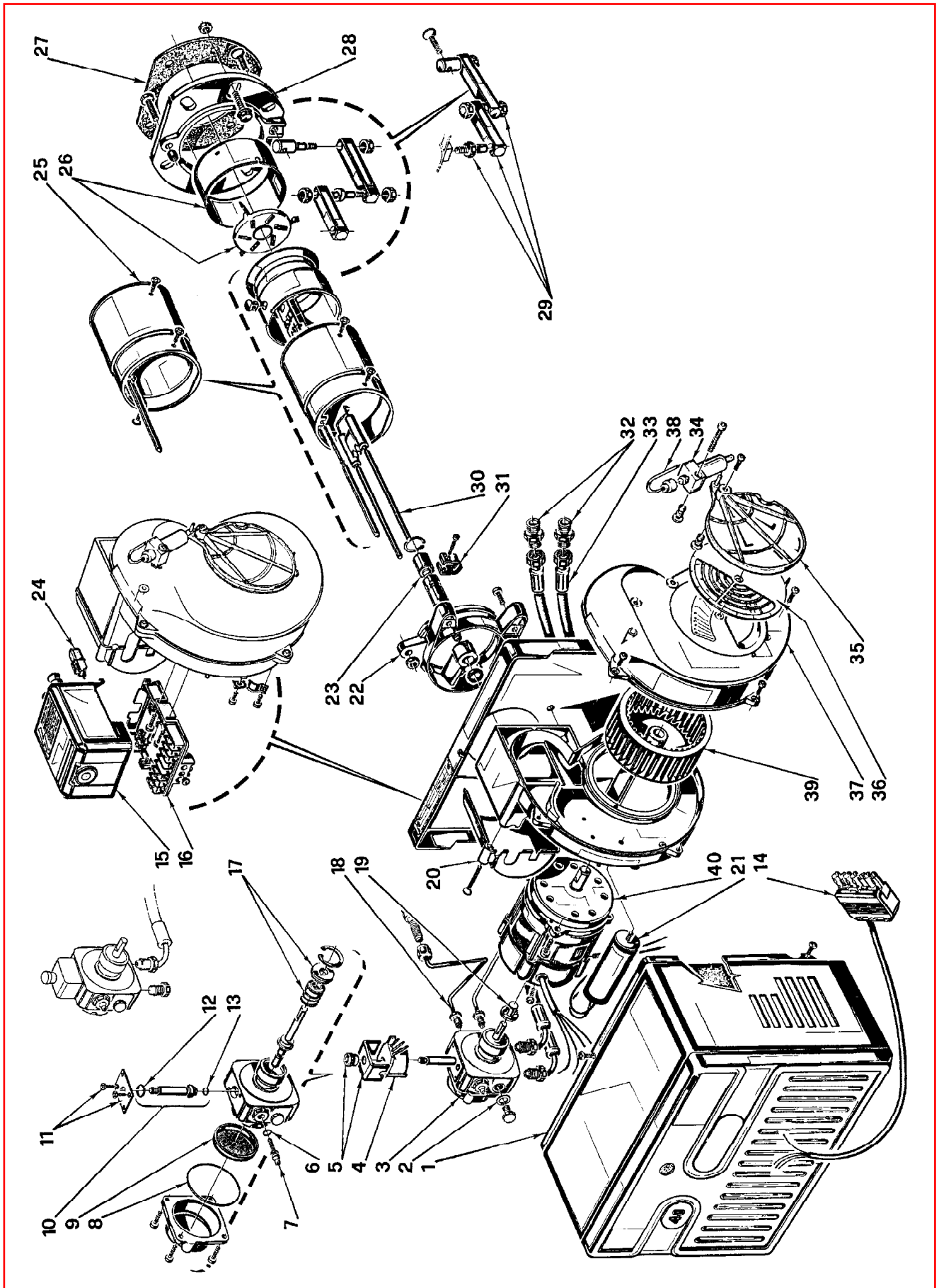


Bruciatore di gasolio • Gas oil burner • Brûleur fioul domestique • Ölbrenner • Oliebrander

RIELLO 40 G10

3746412
COD. 3746414

TIPO / TYPE / TYP **464 T1**



| N. | COD. | DESCRIZIONE | DESCRIPTION | DESCRIPTION | BESCHREIBUNG | BENAMING | MATRICOLA BRUCIATORE BURNER SERIAL NUMBER MATRICULE BRULEUR BRENNER KENN-NUMMER REGISTRATIENR. BRANDER |
|----|---------|------------------------|------------------------|--------------------------|------------------------|------------------------|--|
| 1 | 3007234 | CARENATURA | BODY | CAPOT | VERKLEIDUNG | BEDEKKING | |
| 2 | 3007077 | GUARNIZIONE | SEAL | JOINT | DICHTUNG | PAKKING | |
| 3 | 3007800 | POMPA | PUMP | POMPE | PUMPE | POMP | |
| 4 | 3002279 | BOBINA | COIL | BOBINE | MV SPULE | SPOEL | |
| 5 | 3006553 | MANTELLO E POMELLO | SHELL AND KNOB | ETRIER ET ECROU | BÜGEL UND KNOPF | BEUGEL EN MOER | |
| 6 | 3007028 | ANELLO OR | O - RING | JOINT TORIQUE | O - RING | DICHTING O - RING | |
| 7 | 3007202 | REGOLATORE | REGULATOR | REGULATEUR | REGLER | REGELAAR | |
| 8 | 3007162 | ANELLO OR | O - RING | JOINT TORIQUE | O - RING | DICHTING O - RING | |
| 9 | 3005719 | FILTRO | FILTER | FILTRE | FILTER | FILTER | |
| 10 | 3006925 | VALVOLA | NEEDLE VALVE | VANNE | NADELVENTIL | VENTIEL | |
| 11 | 3007203 | PIASTRINA | PLATE | PLAQUETTE ETRIER | PLATTE | BEUGELPLAATJE | |
| 12 | 3007029 | ANELLO OR | O - RING | JOINT TORIQUE | O - RING | DICHTING O - RING | |
| 13 | 3007156 | ANELLO OR | O - RING | JOINT TORIQUE | O - RING | DICHTING O - RING | |
| 14 | 3006386 | PRESA A 7 POLI | 7 POLE SOCKET | PRISE 7 POLES | 7 - POLIGE STECKDOSE | 7 - POLIGE VR. STEKKER | |
| 15 | 3001156 | APPARECCHIATURA 530SE* | CONTROL BOX 530SE* | BOITE DE CONTROLE 530SE* | STEUERGERÄT 530SE* | CONTROLEDOOS 530SE* | |
| 16 | 3002278 | MORSETTIERA | CONTROL BOX BASE | SOCLE | STECKSOCKEL | BASIS CONTROLEDOOS | |
| 17 | 3000439 | ORGANO DI TENUTA | PUMP SEAL | ORGANE D'ETANCHEITE | WELLENDICHTUNG | ASDICHTING | |
| 18 | 3005789 | TUBO | TUBE | TUYAU | DRUCKROHR | DRUKLEIDING | |
| 19 | 3000443 | GIUNTO | JOINT | ACCOUPLMENT | KUPPLUNG | KOPPELING | |
| 20 | 3006557 | COPERCHIO | COVER | COUVERCLE | DECKEL | DEKSEL | |
| 21 | 3005798 | CONDENSATORE 4 µF | CAPACITOR 4 µF | CONDENSATEUR 4 µF | KONDENSATOR 4 µF | CONDENSATOR 4 µF | |
| 22 | 3005791 | COLLARE | COLLAR | COLLIER | INNERER FLANSCH | TEGENFLENS | |
| 23 | 3005764 | PORTAUGELLO | NOZZLE HOLDER | PORTE GICLEUR | DÜSENSTOCK | SPROEIERHOUDER | |
| 24 | 3002280 | FOTORESISTENZA | P.E. CELL | CELLULE PHOTORESISTANCE | FOTOWIDERSTAND | FOTOCEL | |
| 25 | 3006151 | BOCCAGLIO | BLAST TUBE | GUEULARD | BRENNERROHR | BRANDERKOP | |
| 26 | 3006392 | ANELLO CON ELICA | RING AND DIFFUSER DISC | EMBOUT GUEULARD + AF | FLAMMKOPF+STAUSCHEIBE | BRANDERKOPRING+VLAM. | |
| 27 | 3005795 | SCHERMO | GASKET | JOINT | DICHTUNG | DICHTING | |
| 28 | 3005796 | FLANGIA | FLANGE | BRIDE | FLANSCH | FLENS | |
| 29 | 3000640 | GRUPPO CERNIERA | HINGE UNIT | GROUPE CHARNIERE | SCHARNIEREINHEIT | SCHARNIER | |
| 30 | 3005790 | GRUPPO ELETTRDI | ELECTRODE ASSEMBLY | GROUPE ELECTRODES | ELEKTRODESYSTEM | ELECTRODENGROEP | |
| 31 | 3006552 | FASCETTA | ELECTRODE BRACKET | SUPPORT ELECTRODES | ELECTRODEN HALTERUN G | ELECTRODENKLEM | |
| 32 | 3009068 | RACCORDO | CONNECTOR | MAMELON | NIPPEL | NIPPEL | |
| 33 | 3005720 | TUBO FLESSIBILE | FLEXIBLE OIL LINE | FLEXIBLE | SCHLAUCH | FLEXIBEL | |
| 34 | 3006911 | MARTINETTO | HYDRAULIC JACK | VERIN AIR | LUFTKLAPPE DRUCKKOLBEN | VIJZEL LUCHTREGELING | |
| 35 | 3000879 | SERRANDA | AIR DAMPER | VOLET AIR | LUFTKLAPPE | LUCHTKLEP | |
| 36 | 3007205 | SERRANDA | AIR DAMPER | VOLET AIR | LUFTKLAPPE | LUCHTKLEP | |
| 37 | 3007209 | BOCCA D'ASPIRAZIONE | AIR INTAKE | BOITIER D'ASPIRATION | ANSAUGÖFFNUNG | AANZUIGMOND | |
| 38 | 3007815 | TUBO | TUBE | TUYAU | DRUCKROHR | DRUKLEIDING | |
| 39 | 3005788 | GIRANTE | FAN | VENTILATEUR | GEBLÄSERAD | VENTILATOR | |
| 40 | 3008451 | MOTORE | MOTOR | MOTEUR | MOTOR | MOTOR | |