

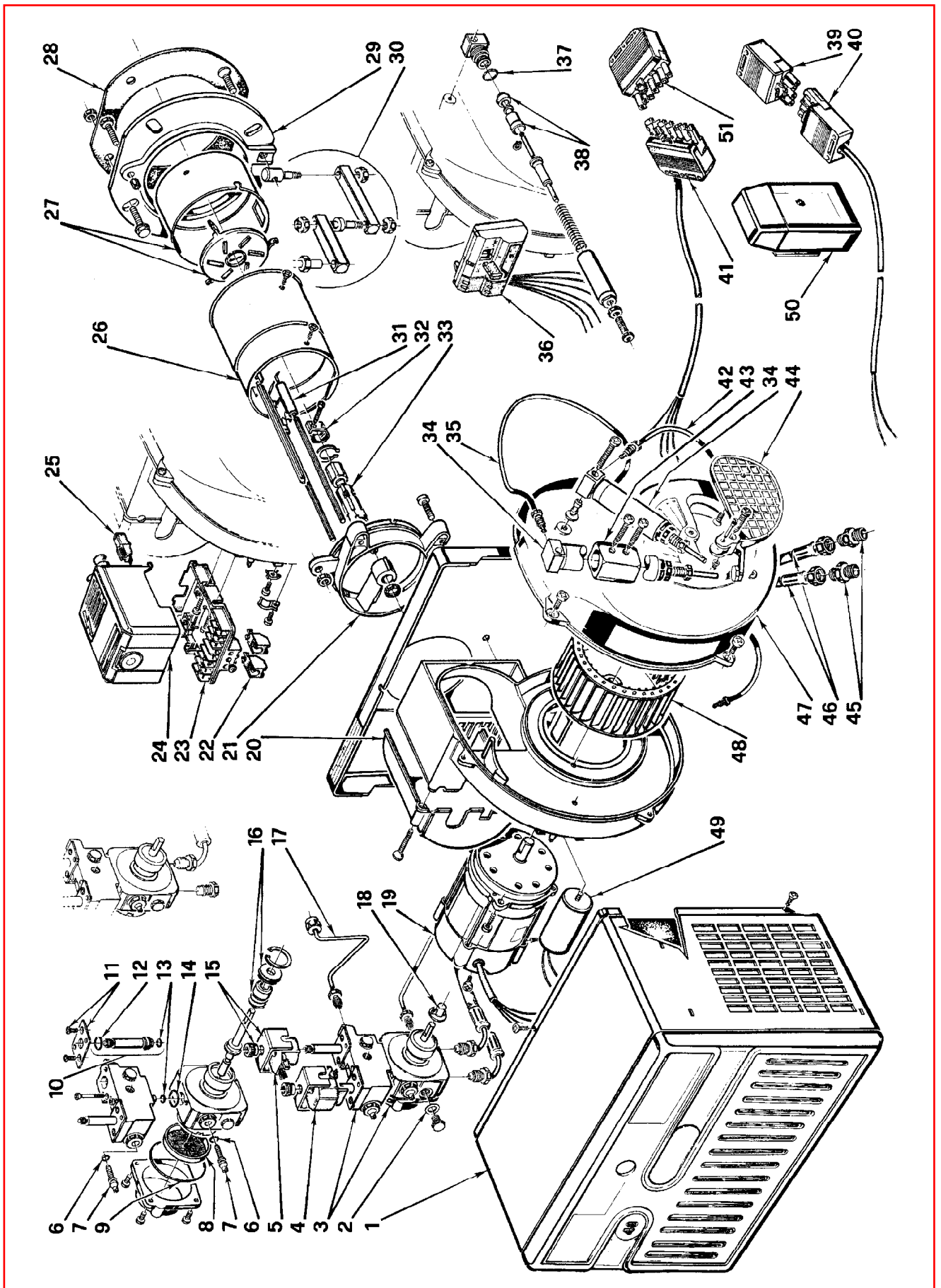
Bruciatore di gasolio • Gas oil burner • Brûleur fioul domestique • Ölbrenner • Oliebrander

**RIELLO 40**

G20 I  
G20 D

COD. 3748409  
COD. 3748414

TIPO / TYPE / TYP **484T1**



N.	COD.	3748409	3748414	DESCRIZIONE	DESCRIPTION	DESCRIPTION	BESCHREIBUNG	BENAMING	MATRICOLA BRUCIATORE BURNER SERIAL NUMBER MATRICULE BRULEUR BRENNER KENN-NUMMER REGISTRATIENR. BRANDER
1	3007235	•	•	CARENATURA	BODY	CAPOT	VERKLEIDUNG	BEDEKKING	
2	3007077	•	•	GUARNIZIONE	SEAL	JOINT	DICHTUNG	PAKKING	
3	3007343	•	•	GRUPPO POMPA-VARIATORE	SPEED GEAR PUMP	POMPE VARIATEUR	GETRIEBE-PUMPE	VENTIELENBLOK	
4	3002300	•	•	BOBINA 2	COIL 2	BOBINE 2	MV SPULE 2	SPOEL 2	
5	3002279	•	•	BOBINA 1	COIL 1	BOBINE 1	MV SPULE 1	SPOEL 1	
6	3007028	•	•	ANELLO OR	O - RING	JOINT TORIQUE	O - RING	DICHTING O - RING	
7	3007202	•	•	REGOLATORE	REGULATOR	REGULATEUR	REGLER	REGELAAR	
8	3005719	•	•	FILTRO	FILTER	FILTRE	FILTER	FILTER	
9	3007162	•	•	ANELLO OR	O - RING	JOINT TORIQUE	O - RING	DICHTING O - RING	
10	3006925	•	•	VALVOLA	NEEDLE VALVE	VANNE	NADELVENTIL	VENTIEL	
11	3007203	•	•	PIASTRINA	PLATE	PLAQUETTE ETRIER	PLATTE	BEUGELPLAATJE	
12	3007029	•	•	ANELLO OR	O - RING	JOINT TORIQUE	O - RING	DICHTING O - RING	
13	3007156	•	•	ANELLO OR	O - RING	JOINT TORIQUE	O - RING	DICHTING O - RING	
14	3007167	•	•	ANELLO OR	O - RING	JOINT TORIQUE	O - RING	DICHTING O - RING	
15	3006553	•	•	MANTELLLO E POMELLO	SHELL AND KNOB	ETRIER ET ECROU	BÜGEL UND KNOPF	BEUGEL EN MOER	
16	3000439	•	•	ORGANO DI TENUTA	PUMP SEAL	ORGANE D'ETANCHEITE	WELLENDICHTUNG	ASDICHTING	
17	3006283	•	•	TUBO	TUBE	TUYAU	DRUCKROHR	DRUKLEIDING	
18	3000443	•	•	GIUNTO	JOINT	ACCOUPLMENT	KUPPLUNG	KOPPELING	
19	3005820	•	•	MOTORE	MOTOR	MOTEUR	MOTOR	MOTOR	
20	3006558	•	•	COPERCHIO	COVER	COUVERCLE	DECKEL	DEKSEL	
21	3005810	•	•	COLLARE	COLLAR	COLLIER	INNERER FLANSCH	TEGENFLENS	
22	3002295	•	•	MORSETTO AUSILIARIO	AUXILIARY CLAMP	BORNE AUXILIAIRE	KLEMME	AUXILIARE KLEMMEN	
23	3002278	•	•	MORSETTIERA	CONTROL BOX BASE	SOCLE	STECKSOCKEL	BASIS CONTROLEDOOS	
24	3001156	•	•	APPARECCHIATURA 530SE*	CONTROL BOX 530SE*	BOITE DE CONTROLE 530SE*	STEUERGERÄT 530SE*	CONTROLEDOOS 530SE*	
25	3002280	•	•	FOTORESISTENZA	P.E. CELL	CELLULE PHOTORESIST.	FOTOWIDERSTAND	FOTOCCEL	
26	3006265	•	•	GRUPPO BOCCALIO	BLAST TUBE ASSEMBLY	GROUPE GUEULARD	BRENNERROHRSYSTEM	BRANDERKOPGROEP	
27	3006264	•	•	ANELLO CON ELICA	RING AND DIFFUSER DISC	EMBOUT GUEULARD + AF	FLAMMKOPF+STAUSCHEIBE	BRANDERKOPRING+VLAM.	
28	3005813	•	•	SCHERMO	GASKET	JOINT	DICHTUNG	DICHTING	
29	3005814	•	•	FLANGIA	FLANGE	BRIDE	FLANSCH	FLENS	
30	3000640	•	•	GRUPPO CERNIERA	HINGE UNIT	GROUPE CHARNIERE	SCHARNIEREINHEIT	SCHARNIER	
31	3005816	•	•	GRUPPO ELETTRODI	ELECTRODE ASSEMBLY	GROUPE ELECTRODES	ELEKTRODESYSYSTEM	ELECTRODENGROEP	
32	3006552	•	•	FASCETTA	ELECTRODE BRACKET	SUPPORT ELECTRODES	ELECTRODEN HALTERUN G	ELECTRODENKLEM	
33	3005764	•	•	PORTAUGELLO	NOZZLE HOLDER	PORTE GICLEUR	DÜSENSTOCK	SPROEIERHOUDER	
34	3006499	•	•	MARTINETTO	HYDRAULIC JACK	VERIN AIR	LUFTKLAPPE DRUCKKOLBEN	VIJZEL LUCHTREGELING	
35	3007821	•	•	TUBO	TUBE	TUYAU	DRUCKROHR	DRUKLEIDING	
36	3002301	•	•	ECONOMIZZATORE	ECONOMIZER	ECONOMISEUR	EKONOMISER	BESPAARDER	
37	3007161	•	•	ANELLO OR	O - RING	JOINT TORIQUE	O - RING	DICHTING O - RING	
38	3007165	•	•	ANELLO DE E PISTONE	DE RING AND PISTON	JOINT ET PISTON	LIPPENDICHTUNG MIT KOLBEN	DICHTING MET ZUIGER	
39	3006957	•	•	SPINA A 4 POLI	4 PIN PLUG	FICHE 4 POLES	4 - POLIGER STECKER	4 - POLIGE STEKKER	
40	3006644	•	•	PRESA A 4 POLI	4 POLE SOCKET	PRISE 4 POLES	4 - POLIGE STECKDOSE	4 - POLIGE VR. STEKKER	
41	3006386	•	•	PRESA A 7 POLI	7 POLE SOCKET	PRISE 7 POLES	7 - POLIGE STECKDOSE	7 - POLIGE VR. STEKKER	
42	3008053	•	•	TUBO	TUBE	TUYAU	DRUCKROHR	DRUKLEIDING	
43	3007393	•	•	BLOCCHETTO	BLOCK	SUPPORT DE VERIN	ENDMASS	VIJZEL STEUN	
44	3007391	•	•	SERRANDA	AIR DAMPER	VOLET AIR	LUFTKLAPPE	LUCHTKLEP	
45	3009068	•	•	RACCORDO	CONNECTOR	MAMELON	NIPPEL	NIPPEL	
46	3005720	•	•	TUBO FLESSIBILE	FLEXIBLE OIL LINE	FLEXIBLE	SCHLAUCH	FLEXIBEL	
47	3007388	•	•	BOCCA D'ASPIRAZIONE	AIR INTAKE	BOITIER D'ASPIRATION	ANSAUGÖFFNUNG	AANZUIGMOND	

